

# Office to let

## Crystal Tower

Bucharest, Sector 1, 48 Iancu de Hunedoara blvd.

### Building information

Building status	Existing
Year of construction	2011
Parking ratio	1 / 100 sq m
Total building area	15 000 sq m

### Commercial terms

Office space*	after login *
Parking	after login *
Service charge*	after login *
Minimum lease term	after login *
Availability	after login *

\* Asking terms for m<sup>2</sup>/month

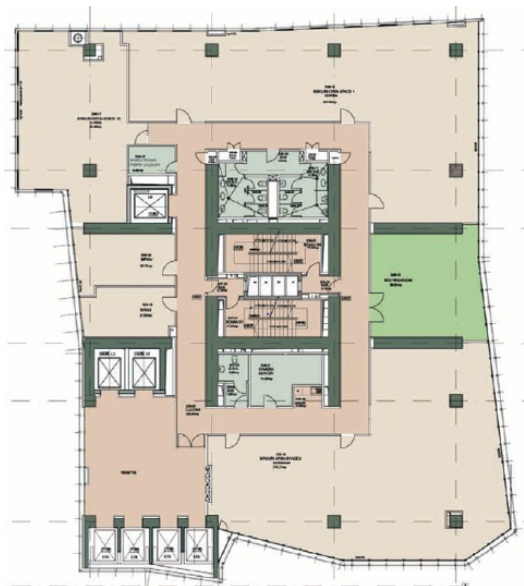
### Location



### Available space

Building completely leased

## Typical floor plan



## Public transport

Metro: M1, M2

Bus: 182, 335, 381

Tram: 1

Contact



+40 21 302 3400

More information